





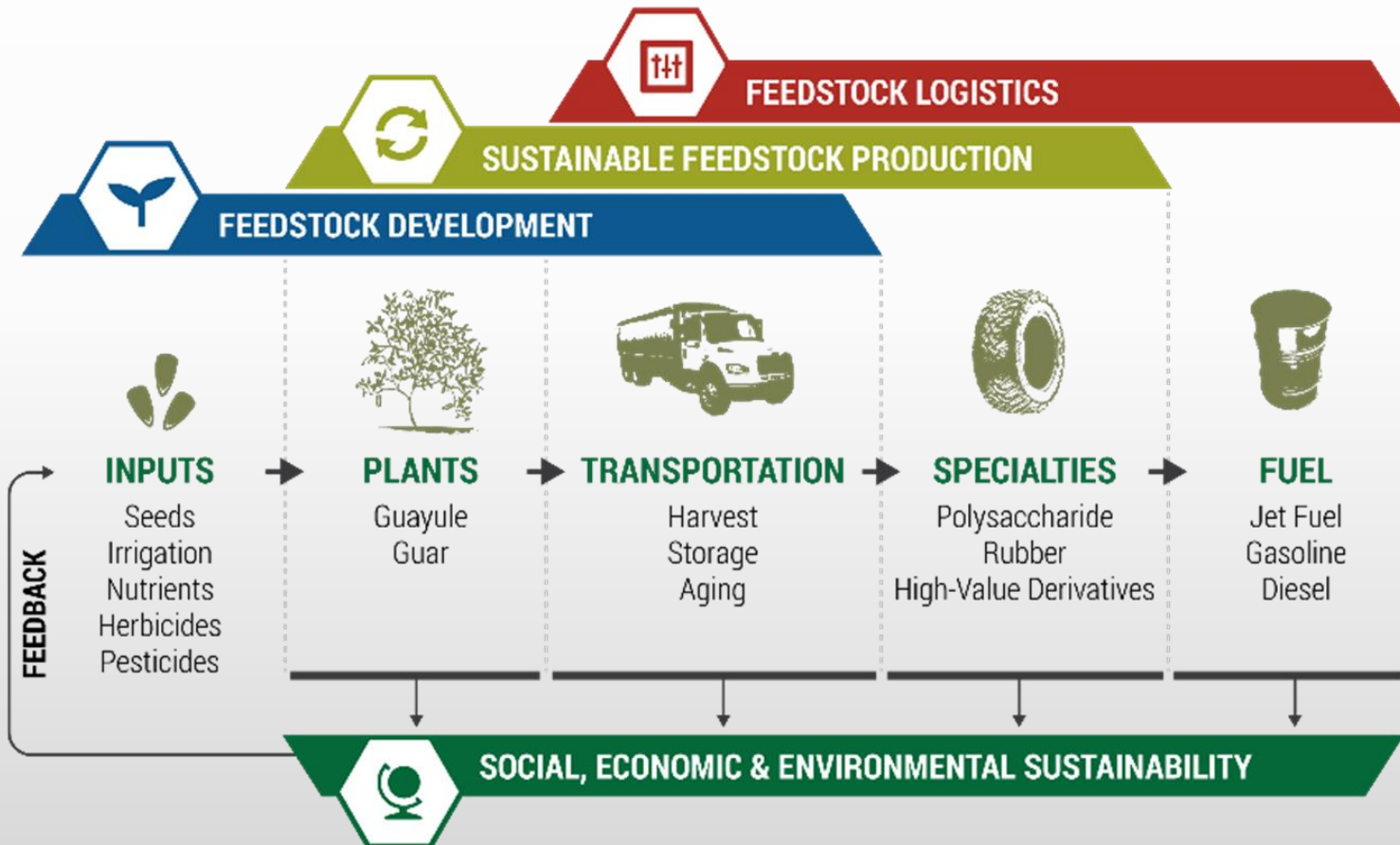
SBAR OVERVIEW

(SUSTAINABLE BIO-ECONOMY FOR ARID REGIONS)

Kim Ogden

Overview

Mission: Build a sustainable bio-economy for arid regions to improve quality of life in rural communities and Native Nations.





United States
Department of
Agriculture

National Institute
of Food and
Agriculture

Agenda

- Introductions
- Personnel
- Accomplishments
- New Projects
- Retreat Overview



Personnel (as of Jun 2019)

■ Kim Ogden – Principal Investigator & Project Director	■ Key Collaborators	23
■ Alix Rogstad – Project Director (Operations)	■ Professional Staff	39
■ Colleen McMahan – Associate Project Director	■ Postdocs	6
■ Dennis Ray – Feedstock Development & Production – <i>Pete Waller</i>	■ Graduate Students	31
■ Catie Brewer – Post-Harvest Logistics & Co-Products	■ Undergraduates	36
■ Jason Quinn – System Performance & Sustainability	■ Graduate Fellows	13
■ John Idowu (NM) & Blase Evancho (AZ) – Extension & Outreach	■ Interns	8
■ Sara Chavarria - Education	■ ACTIVE TOTAL	152
	■ Past Participants	(51)

Accomplishments

- Publications 1 in press, 1 submitted, 1 conference
- Presentations 104

Audience Demographic – estimate	Cumulative Total
Gender	
Male	1028
Female	433
Race/Ethnicity	
Hispanic	204
Asian	127
Native American	205
African American	48
Anglo/White	877



Accomplishments

- Patents, Licenses 2
- Brochures, Factsheets 14
- Press Releases/News 8
- Tabling Events/Workshops (2,300 participants) 25
- Website
 - 3,319 unique sessions (4H, Youth Art, Fellowships, General Description)
 - 43 different countries
 - 20 different states



Accomplishments

- Youth Activities

Demographic – estimate	Cumulative Total
Age Level	
11 – 13 years old	503
14 – 16 years old	64
Gender	
Male	281
Female	286
Race/Ethnicity	
Hispanic	303
Asian	1
Native American	8
African American	6
Anglo/White	66





New Projects

■ Process

- *Submittal of new ideas*
- *Review by Executive Team*
- *Review by Advisory Board*
- *Award*

■ Results

- *Stress Irrigation Study – UA & Bridgestone*
- *Thresher – NMSU*
- *CO₂ Solvent Extractor – NMSU*
- *Model Integration – CSU*



Retreat Overview

- Accomplishments per Component Team
 - *Presentation by Team LEAD*
 - *Posters*
- Student Challenge – SBAR InFO
- Interdisciplinary Working Sessions (4 Total)
 - *Facilitated Pre-assigned groups*
 - *Identify opportunities to integrate project*
 - *Report out to identify and prioritize key points for action*
- Advisory Board Feedback